

BACK-UP ELECTRODES

Phone: 866-RES-WELD (737-9353)

Fax: 714-252-5335

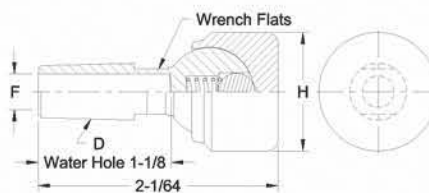
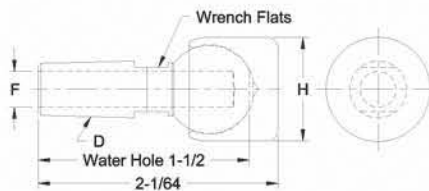
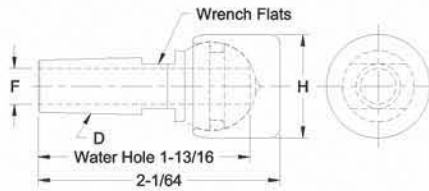
www.seedorffwelders.com

BACK-UP ELECTRODES

PART No.	Taper D	Water Hole Dia. F	Face Dia. H	Type
16-2304	4 RW	9/32	7/8	Thru hole with "O" ring
16-2305	5 RW	3/8		
16-2302	4 RW	9/32	1	
16-2303	5 RW	3/8		
16-2300	4 RW	9/32	1-1/4	
16-2301	5 RW	3/8		
16-2306	5 RW	3/8	1-1/2	

PART No.	Taper D	Water Hole Dia. F	Face Dia. H	Type
16-2314	4 RW	9/32	7/8	Blind hole
16-2315	5 RW	3/8		
16-2312	4 RW	9/32	1	
16-2313	5 RW	3/8		
16-2310	4 RW	9/32	1-1/4	
16-2311	5 RW	3/8		
16-2316	5 RW	3/8	1-1/2	

PART No.	Taper D	Water Hole Dia. F	Face Dia. H	Type
16-23129	4 RW	9/32	1	Blind hole with spring and ball
16-23139	5 RW	3/8		
16-23109	4 RW	9/32	1-1/4	
16-23119	5 RW	3/8		
16-23169	4 RW	9/32	1-1/2	
16-23179	5 RW	3/8		



Standard material: Shank - CMW*3
Cap - CMW*3

Optional material available on special order:
Cap-CMW*100, ELKONITE* & ELKON* facing

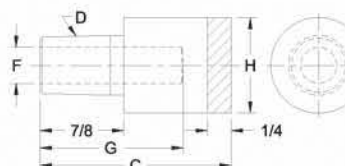
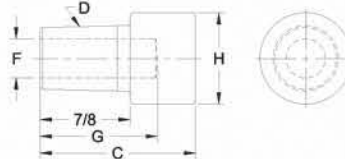
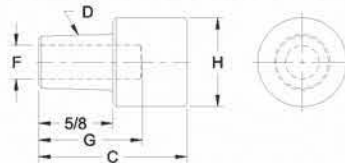


LARGE DIAMETER FLAT FACED BACK-UP ELECTRODES

PART No.	Weld Face Material	O.A.L. C	Taper D	Water Hole		Weld Face Dia. H
				Dia. F	Depth G	
16-3012	CMW*3	1-1/4	4 RW	9/32	7/8	3/4
16-3010						1
16-3030						1-1/4

PART No.	Weld Face Material	O.A.L. C	Taper D	Water Hole		Weld Face Dia. H
				Dia. F	Depth G	
16-3021	CMW*3	1-1/2	5 RW	3/8	1-1/8	7/8
16-3020						1
16-3040						1-1/4
16-3050						1-1/2

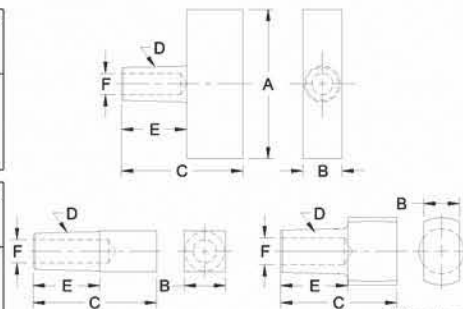
PART No.	Weld Face Material	O.A.L. C	Taper D	Water Hole		Weld Face Dia. H
				Dia. F	Depth G	
16-1392	ELKONITE* 10W3	2	5 RW	3/8	1-1/2	1
16-1393						3
16-1394						2
16-1395						3-1/4
						5/8



SQUARE & RECTANGULAR FACED BACK-UP ELECTRODES

PART No.	Weld Face Material	O.A.L. C	Taper D	Shank Length E	Water Hole Dia. F	Weld Face Lgth. A	Weld Face Width B
16-3111	2						
16-382160	1-1/2						
16-3121	2						

PART No.	Weld Face Material	O.A.L. C	Taper D	Shank Length E	Water Hole Dia. F	Weld Face Lgth. A	Weld Face Width B
16-3120	5/8						
16-384110	1/2						



Other tapers and alloys available to special order